

High Level Review Of Sourcing vs Canopy Map.

The base map used on all of the following slides is from the Canopy Ancient and Endangered forest map.

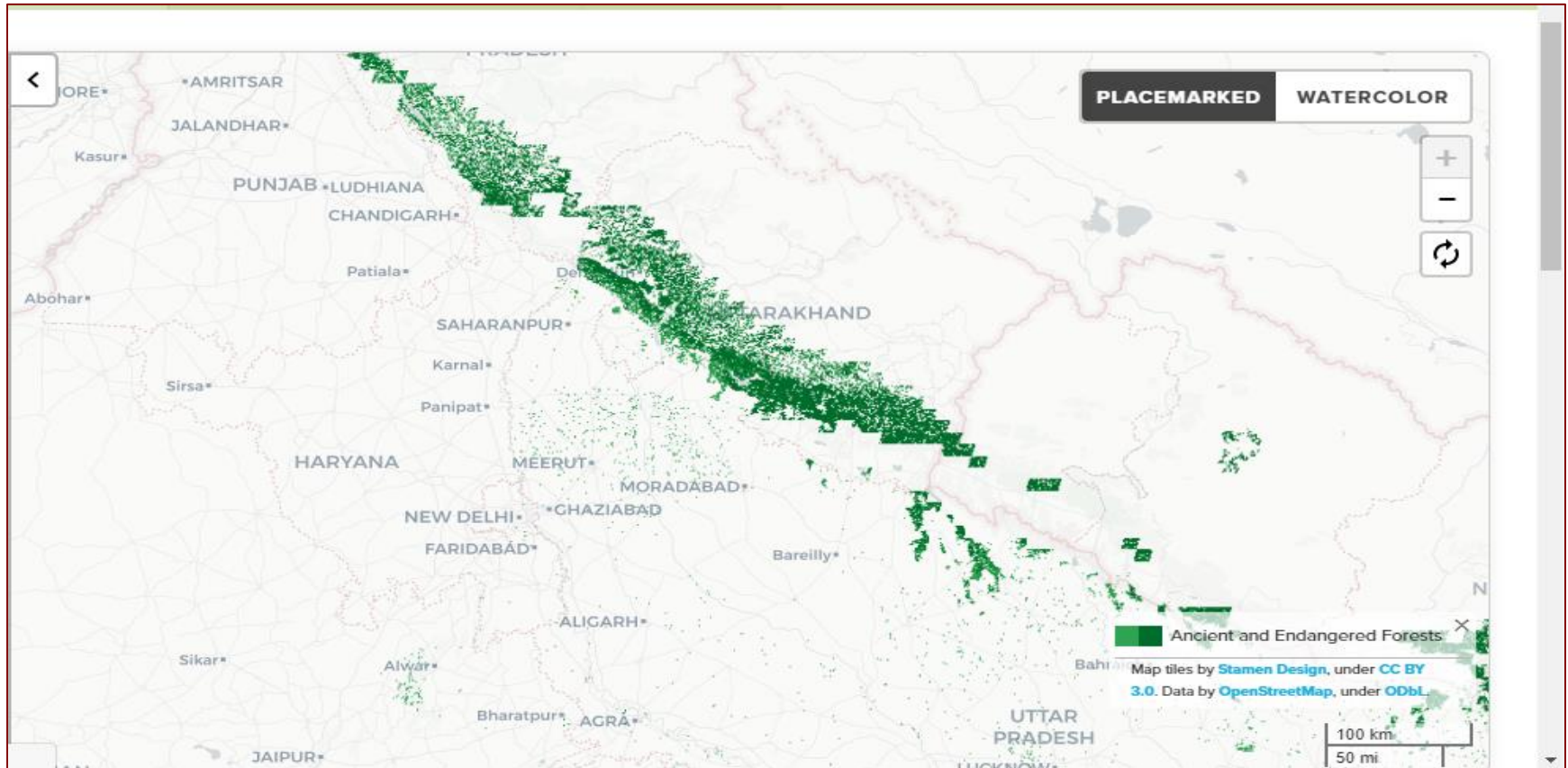
(<https://canopyplanet.org/tools/forestmapper/app>).

The following is to show the areas located around the mills.

We source from do not have Ancient and Endangered forests as per the Canopy Map.

Name of Company	FACILITY	Certificates	Risk Of Sourcing from A&E Forests	Location
Century Pulp and Paper	Pulp	FSC	Low	India
Ekman & Co.AB. Sodra Cell	Pulp	FSC	Low	Sweden
GP Cellulose GMBH	Pulp	FSC/PEFC	Low	United States
DOMSJO FABRIKER	Pulp	FSC/ PEFC	Low	Sweden
Rayonier Advanced Materials Sales & Technology	Pulp	FSC	Low	United States

Century Pulp and Paper, India – Canopy Forest Map



Century Pulp & Paper which is located at Uttarakhand India, the locations on the above map show low risk of sourcing trees from A-E forests as per the Canopy Map. Wide range of landowner types supply this facility.

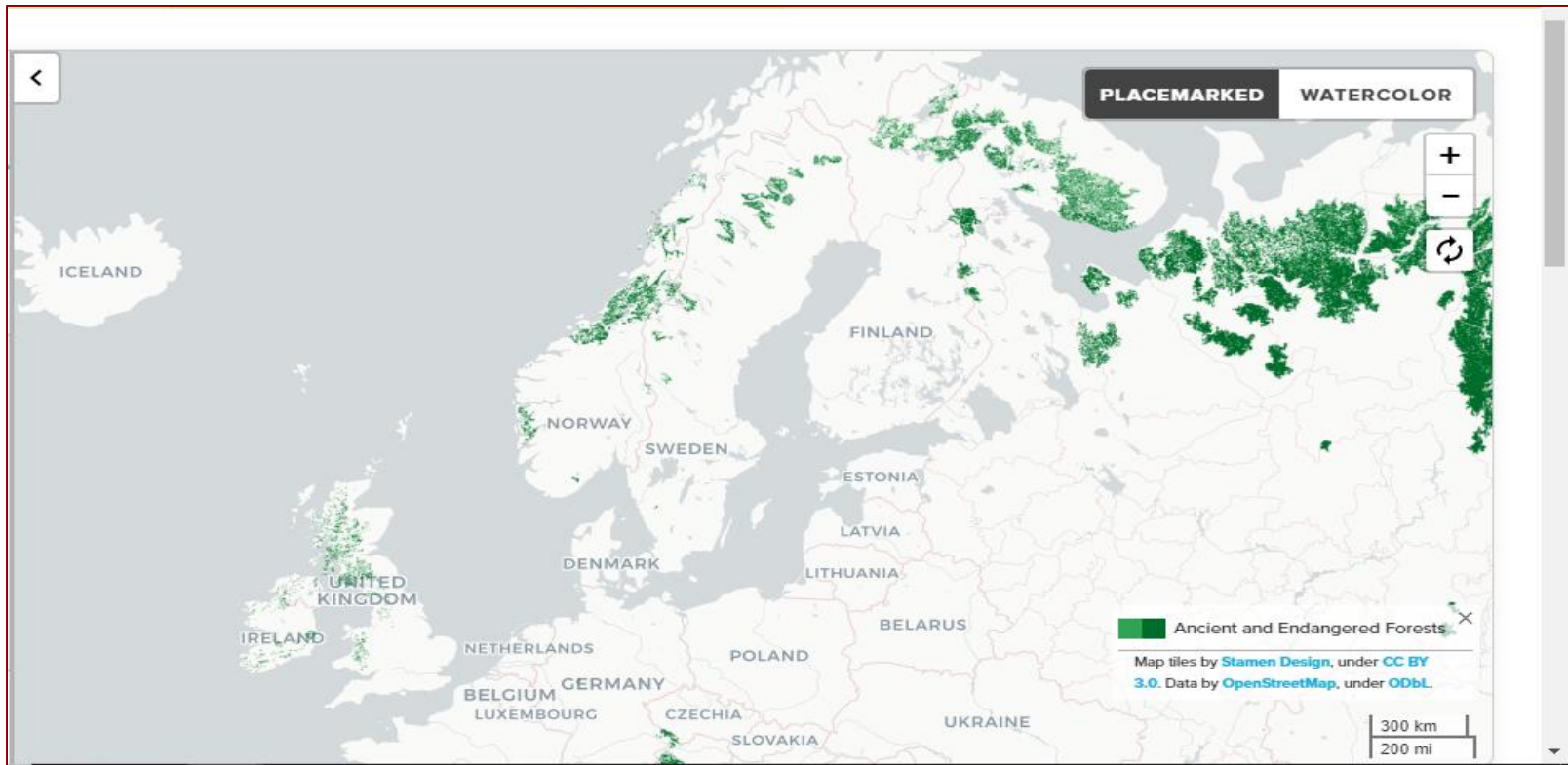
Century Pulp and Paper, India - Google Map

The image is a screenshot of a Google Maps interface. At the top, the browser address bar shows the URL: [google.com/maps/place/Century+Pulp+%26+Paper/@29.0582614,77.2810656,7z/data=!4m5!3m4!1s0x39a08653e98f4db1:0x4ce6d26b5c7f6e73!8m2!3d29.0582614...](https://www.google.com/maps/place/Century+Pulp+%26+Paper/@29.0582614,77.2810656,7z/data=!4m5!3m4!1s0x39a08653e98f4db1:0x4ce6d26b5c7f6e73!8m2!3d29.0582614...). The search bar contains the text "Century Pulp & Paper, Lalkuan, Uttarakhand".

On the left side, there is a photo of the Century Pulp & Paper facility. Below the photo, the text reads "Century Pulp & Paper" with a 4.1 star rating and "(39)" reviews. Underneath, it says "Paper mill". There are five icons for "Directions", "Save", "Nearby", "Send to your phone", and "Share".

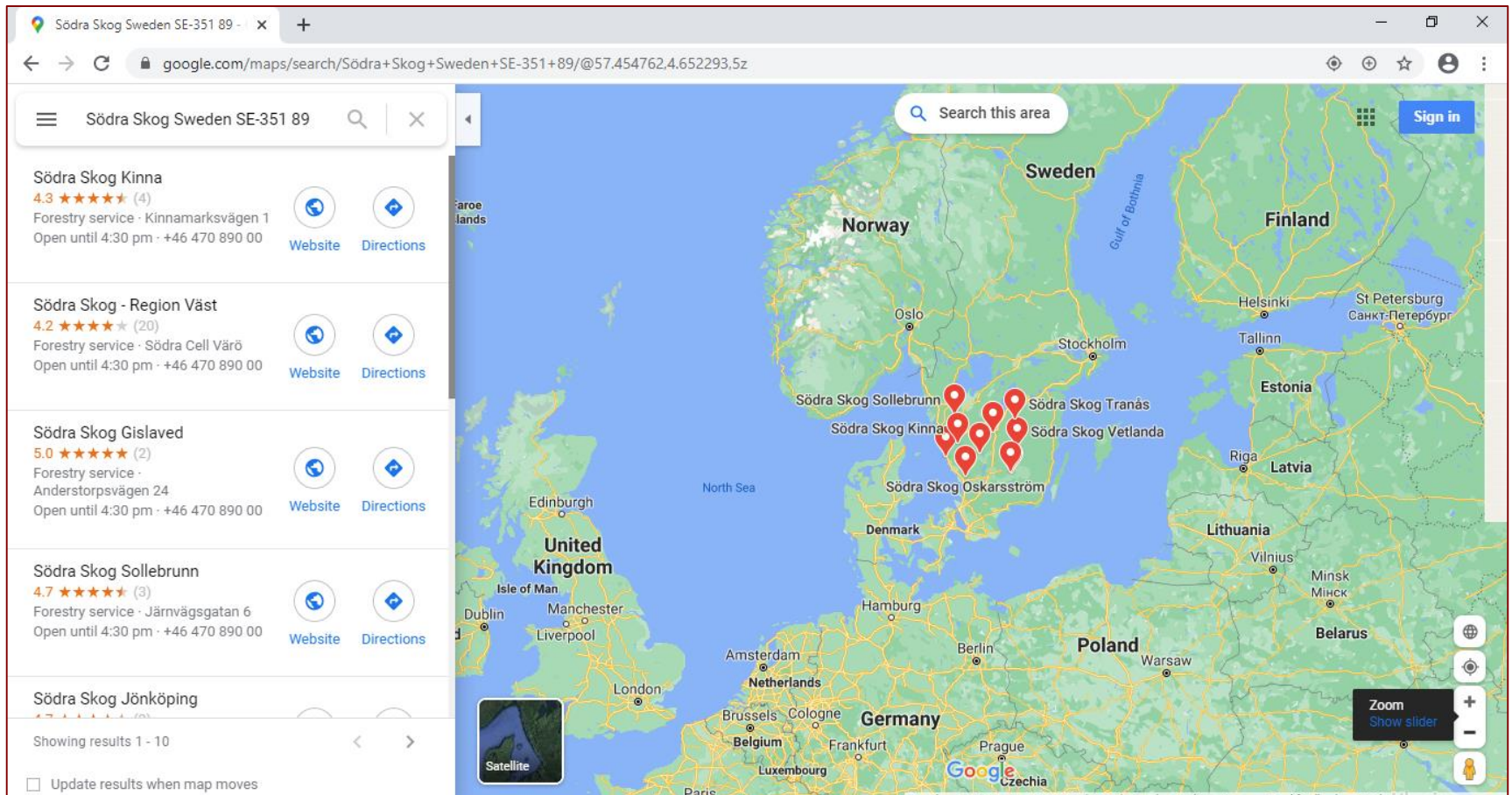
The main map area shows a satellite view of the region. A red pin marks the location of "Century Pulp & Paper" in Lalkuan, Uttarakhand. The map displays various states and cities in India, including Punjab, Chandigarh, Haryana, Delhi, Uttar Pradesh, and Uttarakhand. Neighboring countries like Nepal are also visible. The map includes a "Satellite" view selector, a "Zoom" control with a "Show slider" option, and a "Sign in" button in the top right corner.

Sodra Cell Sweden- Canopy Forest Map



Sodra Cell which is located in Sweden , the locations on the above map show low risk of sourcing trees from A-E forests as per the Canopy Map. Wide range of landowner types supply this facility.

Sodra Cell Sweden- Google Map

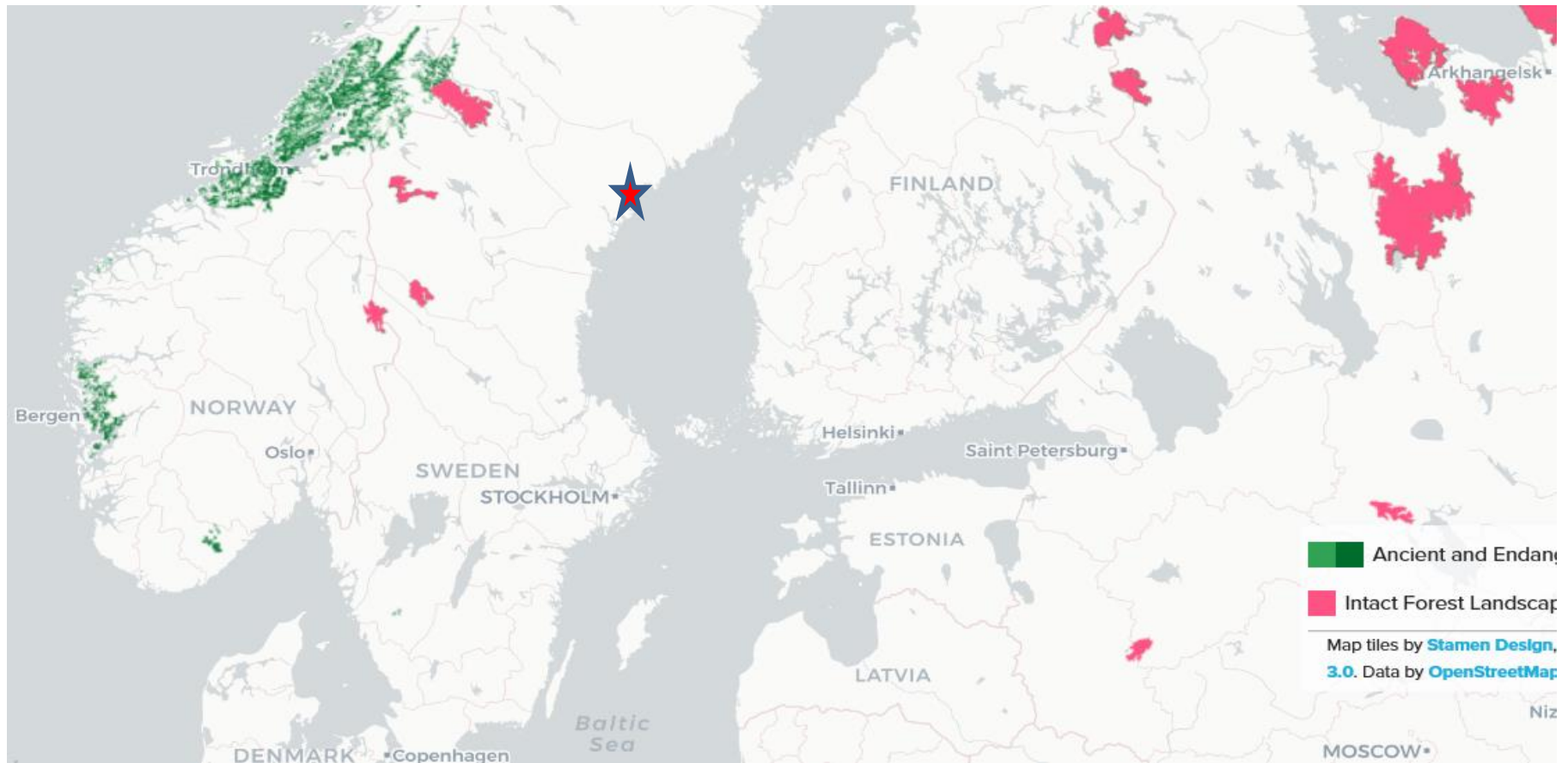


GP Folley Cellulose Perry Florida US – Canopy Forest Map



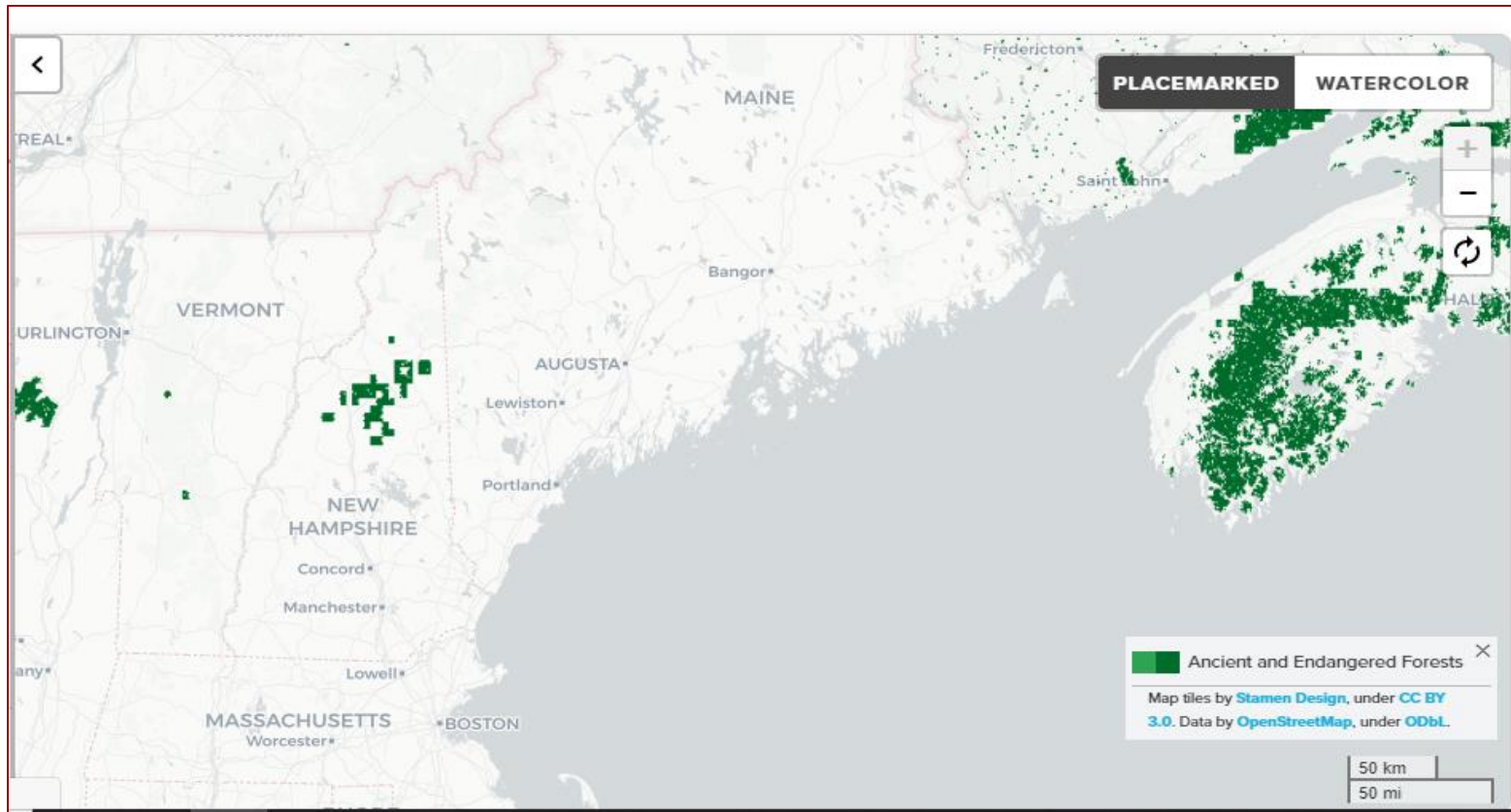
Folley Cellulose is located near Perry Florida in the US as indicated by a red star on the above map which is in an area of low risk of sourcing of trees from A-E since the facilities is supplied by a wide range of landowner types, all fibre is from Pine plantation in the local area.

Domsjo, Sweden – Canopy Forest Map



Domsjo which is located in Sweden identified by red star show the locations on the above map show low risk of sourcing trees from A-E forests as per the Canopy Map. Wide range of landowner types supply this facility.

Rayonier Advanced Materials, United States - Canopy Forest Map



Rayonier Advanced Material which is located in United States , the locations on the above map show low risk of sourcing trees from A-E forests as per the Canopy Map. Wide range of landowner types supply this facility.

Rayonier Advanced Materials, United States – Google Map

The image is a screenshot of the Google Maps interface. At the top, a search bar contains the text "Jesup Georgia United States". To the left of the search bar is a hamburger menu icon, and to the right are search and close icons. Below the search bar is a photo of a playground with yellow slides and a wooden structure. The main map area shows the southeastern United States, with a red location pin placed in the state of Georgia, near the town of Jesup. The map displays major highways, cities, and state boundaries. On the right side of the map, there is a "Sign in" button and a vertical toolbar with icons for globe, location, zoom in, zoom out, and street view. On the left side, below the photo, is a white information panel for "Jesup, Georgia, USA". It shows the weather as "Clear · 16°C" at "7:24 AM". Below the weather are five icons for "Directions", "Save", "Nearby", "Send to your phone", and "Share". At the bottom of the information panel is a "Photos" section with a photo of two geese on a bank near water. A "Satellite" button is visible at the bottom left of the map area.